

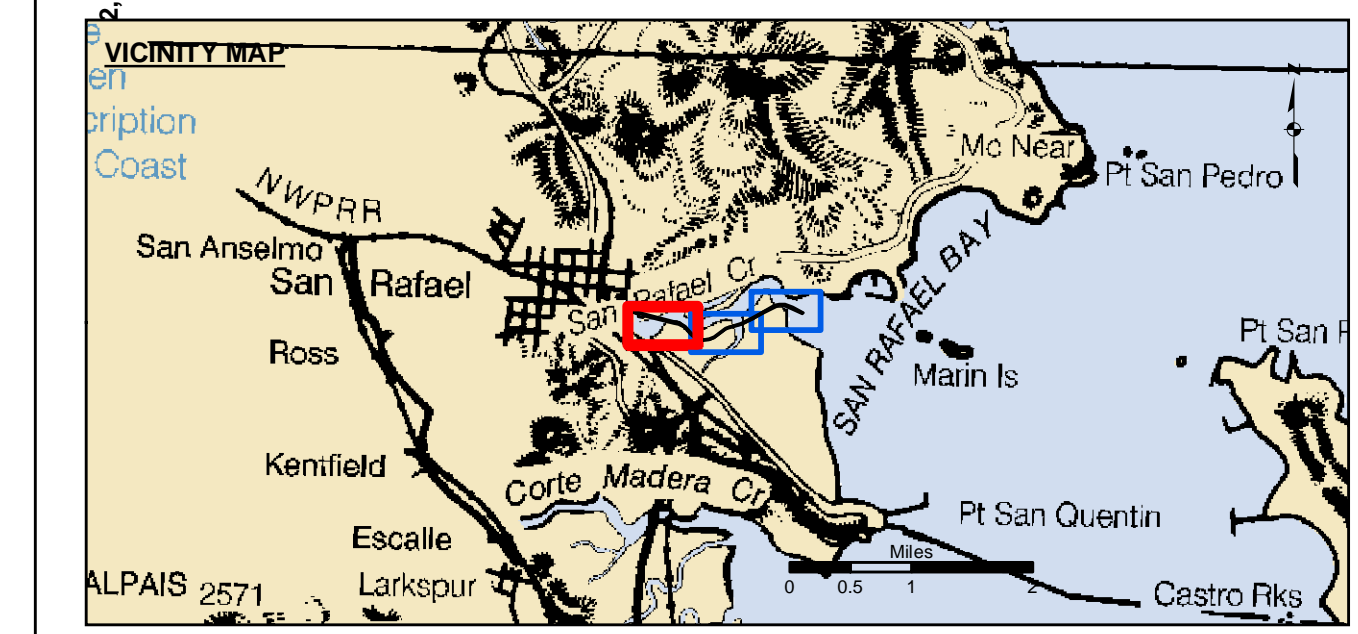
**PRELIMINARY ISSUE**  
THIS PLAN ISSUED FOR  
ADVANCE INFORMATION ONLY

← FLOOD  
EBB →

NAD 83 CENTERLINE ANGLE POINTS		
Δ PT	X	Y
C1	5987089.37	2181692.15
C2	5986334.07	2182035.55
C3	5986088.27	2182054.45
C4	5985885.57	2181993.85
C5	5985380.77	2181729.75
C6	5984935.97	2181458.25
C7	5984421.07	2181213.45
C8	5983862.47	2181058.95
C9	5983735.07	2181010.85
C10	5983242.97	2180634.65
C11	5983023.37	2180542.35
C12	5982759.17	2180513.25
C13	5982475.57	2180605.75
C14	5982265.37	2180760.35
C15	5981973.07	2181089.55
C16	5981896.67	2181147.35
C17	5981723.17	2181235.75
C18	5981476.77	2181276.25
C19	5980172.77	2181612.05
C20	5979679.07	2181750.05

NAD 83 CHANNEL ANGLE POINTS		
Δ PT	X	Y
1	5987101.87	2181719.45
2	5986637.57	2181930.55
3	5986341.67	2182065.05
4	5986084.97	2182084.85
5	5985874.27	2182021.75
6	5985365.97	2181755.85
7	5984921.77	2181484.65
8	5984410.57	2181241.65
9	5983853.17	2181087.55
10	5983720.27	2181037.35
11	5983227.77	2180660.75
12	5983015.77	2180571.65
13	5982762.27	2180543.75
14	5982489.47	2180632.75
15	5982285.67	2180782.65
16	5981993.57	2181111.65
17	5981912.57	2181172.85
18	5981732.57	2181264.65
19	5981482.97	2181305.55
20	5980180.57	2181641.55
21	5979689.27	2181778.35
22	5979668.87	2181721.75

NAD 83 CHANNEL ANGLE POINTS		
Δ PT	X	Y
23	5979972.37	2181637.25
24	5979945.57	2181540.95
25	5980138.27	2181487.25
26	5980165.07	2181583.65
27	5981470.57	2181246.85
28	5981713.67	2181206.95
29	5981880.67	2181121.75
30	5981952.57	2181067.35
31	5982244.97	2180738.05
32	5982461.67	2180578.65
33	5982755.97	2180482.65
34	5983030.97	2180512.95
35	5983258.17	2180608.45
36	5983749.77	2180984.35
37	5983871.87	2181030.45
38	5984431.57	2181185.15
39	5984950.27	2181431.85
40	5985395.57	2181703.65
41	5985896.97	2181965.95
42	5986091.47	2182024.15
43	5986326.57	2182006.05
44	5987076.97	2181664.85



Federal Navigation Channel	Beacon, General	<b>Contours</b>
Shoaling Area	Obstruction Point	
Placement Area	Navigation Buoy	-6
Anchorage Area	Navigation Buoy	-5
Wreck Area	Shoalest Sounding*	-4
Submerged Wreck		-3
Angle Point		-2

**NOTES:**  
DRAWINGS NOT TO BE USED FOR NAVIGATION. ONLY CHANNEL CONDITION AT DATE OF SURVEY.  
THE LOCATION OF ALL NAVIGATION AIDS ARE BASED ON INFORMATION PROVIDED BY THE U.S. COAST GUARD. BUOY LOCATIONS REPRESENT THE POSITION OF THE SINKER ONLY.

SURVEYED BY THE CORPS OF ENGINEERS.

SOUNDINGS FOR ARE TAKEN BY FATHOMETER AND ARE SHOWN TO THE NEAREST FOOT AND TENTH OF A FOOT.

SOUNDINGS ARE BASED ON THE DATUM OF MEAN LOWER LOW WATER AT THE LOCALITY.

PLANE GRID AND COORDINATES ARE BASED ON LAMBERT PROJECTION, ZONE III NAD 83, CALIFORNIA, AS DESCRIBED IN SPECIAL PUBLICATION NO. 236, PUBLISHED BY NATIONAL OCEAN SURVEY.

THE PROJECT DEPTH IS 5 FEET.

HORIZONTAL CONTROL: DESIGNATION, SOURCE, XYZ COAST GUARD D-BEACON

VERTICAL CONTROL: BENCHMARK, MLLW ELEV., AGENCY B.M. TIDAL 17 (1951), USCGS DISK, 9.73 MLLW HARBOR ST. PUMPHOUSE, EAST FRANCISCO BLVD. B.M. L 551 (1956), USCGS DISK, 15.61 MLLW SAN RAFAEL SANITARY DIST. PUMPHOUSE, PT. SAN PEDRO RD.

TIDE GAGE LOCATION: SAN RAFAEL YACHT HARBOR & MARIN YACHT HARBOR  
STA. 119+00 TO 150+00 ... Marin Yacht Harbor  
STA. 150+00 TO 200+00 ... San Rafael Yacht Harbor  
FLOOD ⇒ SLACK ⇒ EBB TIDE SURVEY 5.2 FT ⇒ 6.4 FT.

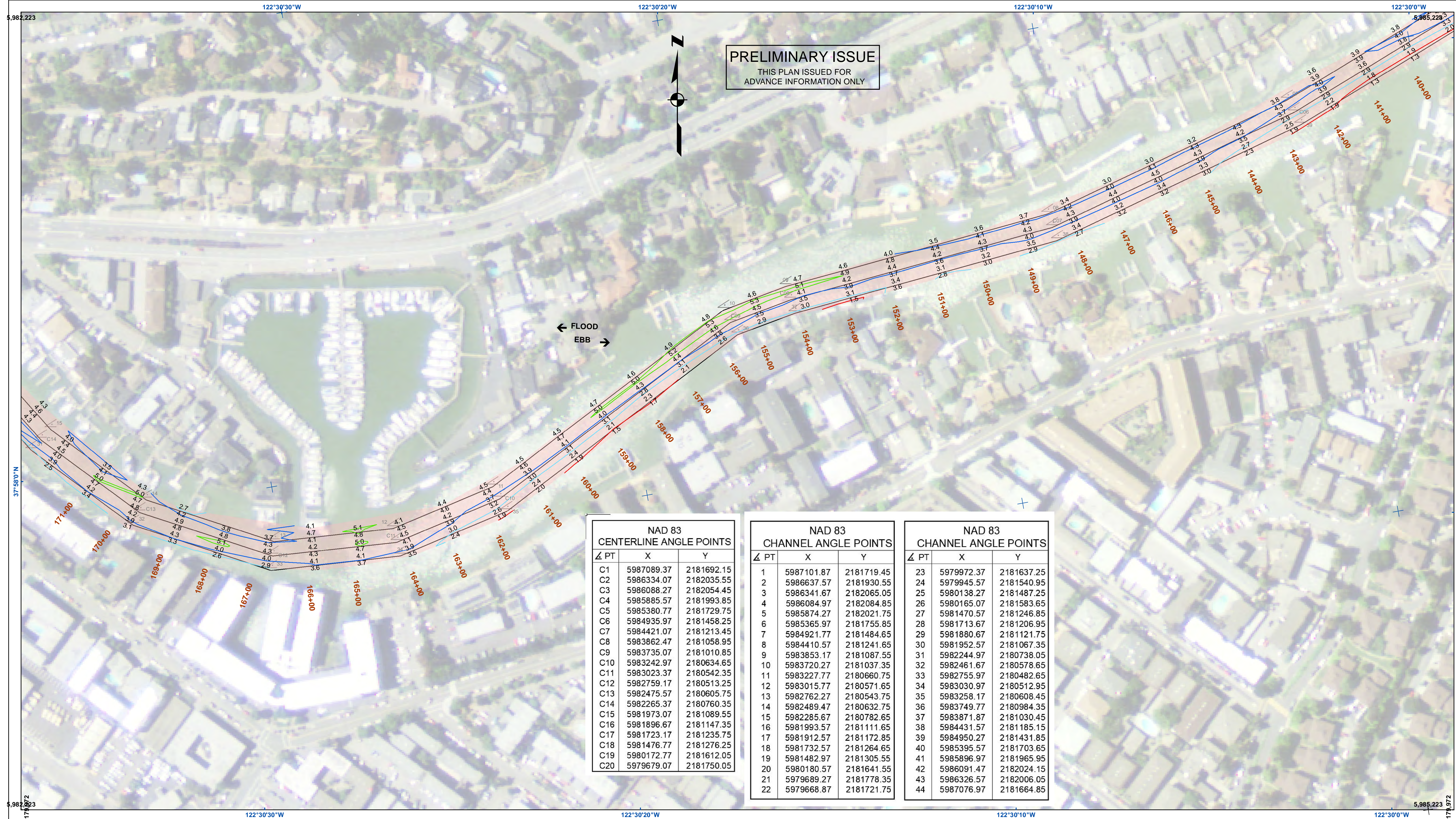
**US Army Corps of Engineers**  
San Francisco District  
450 Market Street  
San Francisco, CA 94102

**DISCLAIMER:**  
The United States Government furnishes this information as a service to the public and does not warrant, express or implied, the accuracy, completeness, or reliability of the information. The user is responsible for the results of any application of the data for other than its intended purpose. The user is responsible for the results of any application of the data for other than its intended purpose. The user is responsible for the results of any application of the data for other than its intended purpose.

Chart Date:	May 21, 2021
Designed by:	
Drawn by:	PDT
Surveyed By:	
Plotted By:	
Checked By:	PDT

CALIFORNIA  
MARIN COUNTY  
**SAN RAFAEL CREEK**  
CONDITION SURVEY  
09 February 2021

**Sheet**  
**Reference**  
**Number**  
**1 of 3**



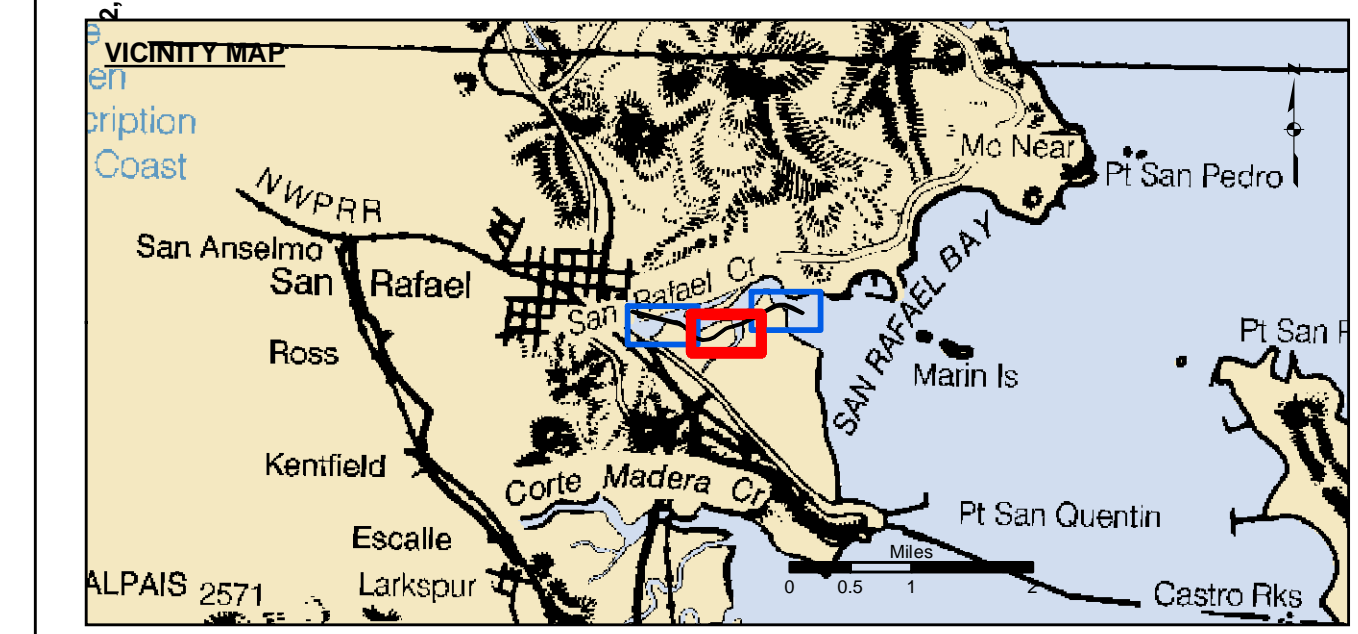
**PRELIMINARY ISSUE**  
THIS PLAN ISSUED FOR  
ADVANCE INFORMATION ONLY

← FLOOD  
EBB →

NAD 83 CENTERLINE ANGLE POINTS		
△ PT	X	Y
C1	5987089.37	2181692.15
C2	5986334.07	2182035.55
C3	5986088.27	2182054.45
C4	5985885.57	2181993.85
C5	5985380.77	2181729.75
C6	5984935.97	2181458.25
C7	5984421.07	2181213.45
C8	5983862.47	2181058.95
C9	5983735.07	2181010.85
C10	5983242.97	2180634.65
C11	5983023.37	2180542.35
C12	5982759.17	2180513.25
C13	5982475.57	2180605.75
C14	5982265.37	2180760.35
C15	5981973.07	2181089.55
C16	5981896.67	2181147.35
C17	5981723.17	2181235.75
C18	5981476.77	2181276.25
C19	5980172.77	2181612.05
C20	5979679.07	2181750.05

NAD 83 CHANNEL ANGLE POINTS		
△ PT	X	Y
1	5987101.87	2181719.45
2	5986637.57	2181930.55
3	5986341.67	2182065.05
4	5986084.97	2182084.85
5	5985874.27	2182021.75
6	5985365.97	2181755.85
7	5984921.77	2181484.65
8	5984410.57	2181241.65
9	5983853.17	2181087.55
10	5983720.27	2181037.35
11	5983227.77	2180660.75
12	5983015.77	2180571.65
13	5982762.27	2180543.75
14	5982489.47	2180632.75
15	5982285.67	2180782.65
16	5981993.57	2181111.65
17	5981912.57	2181172.85
18	5981732.57	2181264.65
19	5981482.97	2181305.55
20	5980180.57	2181641.55
21	5979689.27	2181778.35
22	5979668.87	2181721.75

NAD 83 CHANNEL ANGLE POINTS		
△ PT	X	Y
23	5979972.37	2181637.25
24	5979945.57	2181540.95
25	5980138.27	2181487.25
26	5980165.07	2181583.65
27	5981470.57	2181246.85
28	5981713.67	2181206.95
29	5981880.67	2181121.75
30	5981952.57	2181067.35
31	5982244.97	2180738.05
32	5982461.67	2180578.65
33	5982755.97	2180482.65
34	5983030.97	2180512.95
35	5983258.17	2180608.45
36	5983749.77	2180984.35
37	5983871.87	2181030.45
38	5984431.57	2181185.15
39	5984950.27	2181431.85
40	5985395.57	2181703.65
41	5985896.97	2181965.95
42	5986091.47	2182024.15
43	5986326.57	2182006.05
44	5987076.97	2181664.85



Federal Navigation Channel	Beacon, General	<b>Contours</b>
Shoaling Area	Obstruction Point	
Placement Area	Navigation Buoy	-6
Anchorage Area	Navigation Buoy	-5
Wreck Area	Shoalest Sounding*	-4
Submerged Wreck		-3
Angle Point		-2

NOTES:  
DRAWINGS NOT TO BE USED FOR NAVIGATION. ONLY CHANNEL CONDITION AT DATE OF SURVEY.  
THE LOCATION OF ALL NAVIGATION AIDS ARE BASED ON INFORMATION PROVIDED BY THE U.S. COAST GUARD. BUOY LOCATIONS REPRESENT THE POSITION OF THE SINKER ONLY.

SURVEYED BY THE CORPS OF ENGINEERS.

SOUNDINGS FOR ARE TAKEN BY FATHOMETER AND ARE SHOWN TO THE NEAREST FOOT AND TENTH OF A FOOT.

SOUNDINGS ARE BASED ON THE DATUM OF MEAN LOWER LOW WATER AT THE LOCALITY.

PLANE GRID AND COORDINATES ARE BASED ON LAMBERT PROJECTION, ZONE III NAD 83, CALIFORNIA, AS DESCRIBED IN SPECIAL PUBLICATION NO. 236, PUBLISHED BY NATIONAL OCEAN SURVEY.

THE PROJECT DEPTH IS 5 FEET.

HORIZONTAL CONTROL: DESIGNATION, SOURCE, XYZ COAST GUARD D-BEACON

VERTICAL CONTROL: BENCHMARK, MLLW ELEV., AGENCY B.M. TIDAL 17 (1951), USCGS DISK, 9.73 MLLW HARBOR ST. PUMPHOUSE, EAST FRANCISCO BLVD. B.M. L 551 (1956), USCGS DISK, 15.61 MLLW SAN RAFAEL SANITARY DIST. PUMPHOUSE, PT. SAN PEDRO RD.

TIDE GAGE LOCATION: SAN RAFAEL YACHT HARBOR & MARIN YACHT HARBOR  
STA. 119+00 TO 150+00 ... Marin Yacht Harbor  
STA. 150+00 TO 200+00 ... San Rafael Yacht Harbor  
FLOOD ⇒ SLACK ⇒ EBB TIDE SURVEY 5.2 FT ⇒ 6.4 FT.

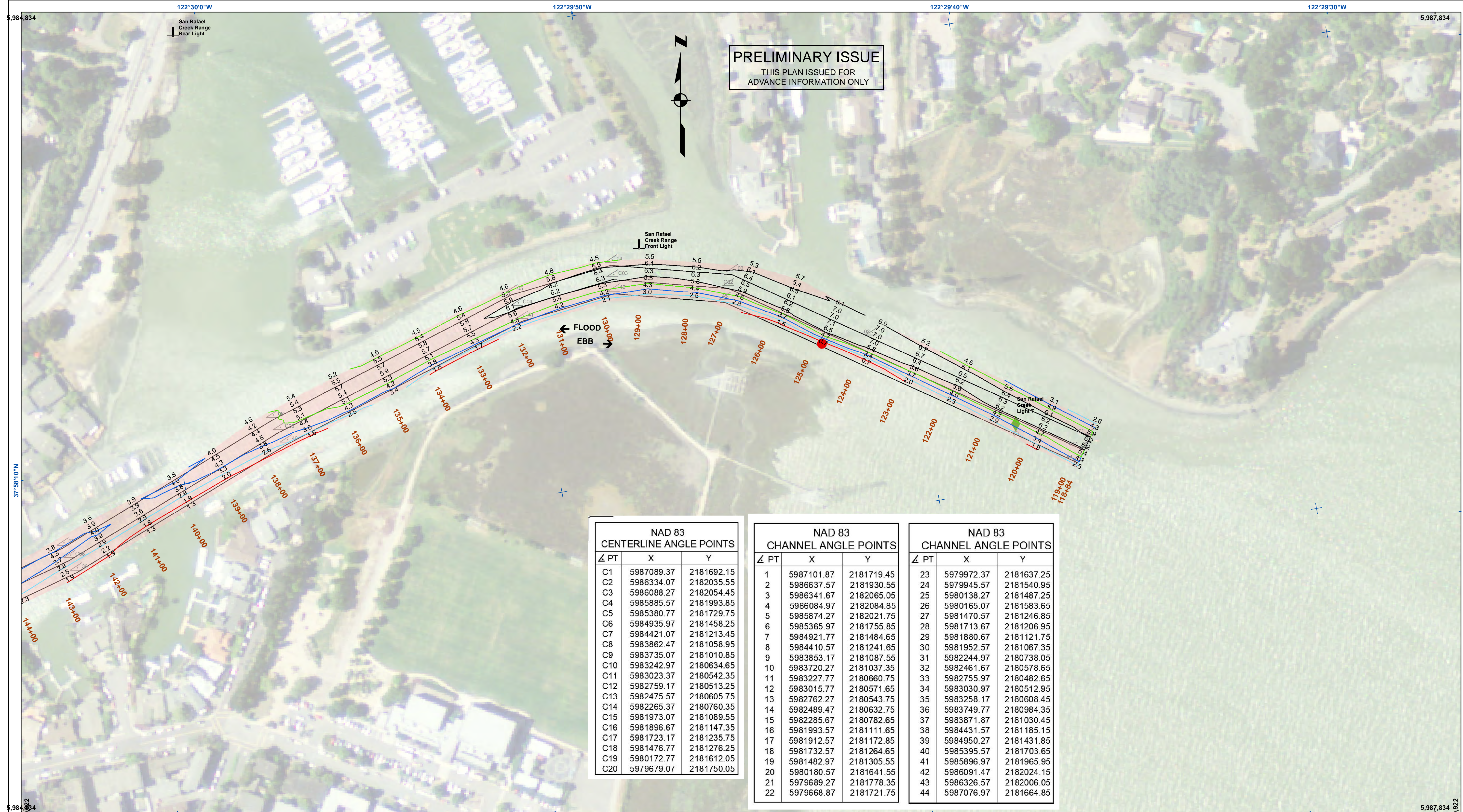
**US Army Corps of Engineers**  
San Francisco District  
450 Market Street  
San Francisco, CA 94102

**DISCLAIMER**  
The data represents the results of data collected by the US Army Corps of Engineers. The data is provided for informational purposes only. The data is not intended for use in any other application. The user is responsible for the results of any application of the data for other than its intended purpose. The US Army Corps of Engineers makes no warranty, expressed or implied, concerning the accuracy, completeness, or reliability of the data. The US Army Corps of Engineers is not liable for any damages, including consequential damages, arising from the use of the data. The user agrees to hold the US Army Corps of Engineers harmless from any and all claims, damages, and expenses, including reasonable attorneys' fees, arising from the use of the data. The user agrees to indemnify and hold the US Army Corps of Engineers harmless from any and all claims, damages, and expenses, including reasonable attorneys' fees, arising from the use of the data.

Prepared Under the Direction of:	Chart Date:
JOHN D. CUNNINGHAM	May 21, 2021
LT Colonel, C.E., District Engineer	Designed by:
Subproject: PDT	Plotted by:
Hydro Survey Team Leader	Checked by:
Recommended:	Drawn by:
Chief, Hydro Survey Section	PDT
Approved:	PDT
Chief, Construction Branch	

CALIFORNIA  
MARIN COUNTY  
SAN RAFAEL CREEK  
CONDITION SURVEY  
09 February 2021

Sheet  
Reference  
Number  
**2 of 3**



**US Army Corps of Engineers**  
 San Francisco District  
 450 Market Street  
 San Francisco, CA 94102

**DISCLAIMER**  
 The United States Government furnishes no warranty, expressed or implied, concerning the accuracy, completeness, or reliability of the data. The user is responsible for the results of any application of the data for other than its intended purpose. The user is responsible for its intended use, content, time and accuracy specifications. The user is responsible for the results of any application of the data for other than its intended purpose. The user is responsible for its intended use, content, time and accuracy specifications. The user is responsible for the results of any application of the data for other than its intended purpose.

Chart Date:	May 21, 2021
Designed by:	
Drawn by:	PDT
Checked by:	PDT
Approved:	
Surveyed By:	
Plotted By:	
Checked By:	
Approved:	

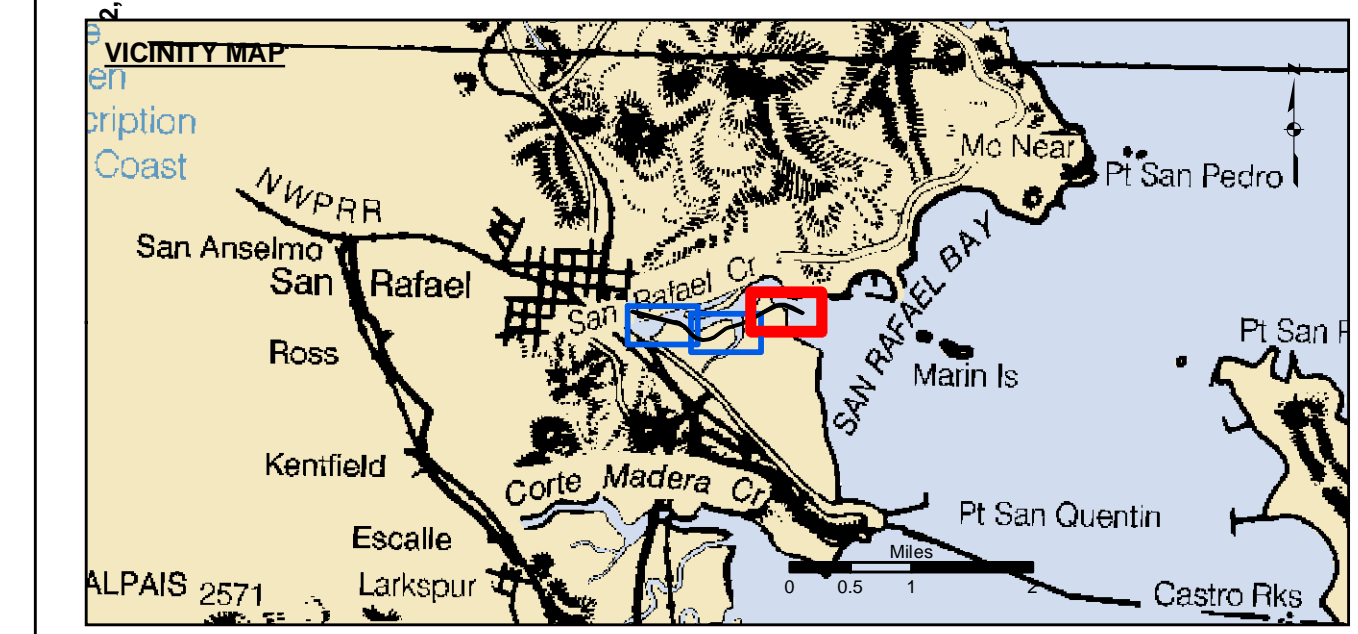
CALIFORNIA  
 SAN RAFAEL CREEK  
 CONDITION SURVEY  
 09 February 2021

Sheet  
 Reference  
 Number  
**3 of 3**

NAD 83 CENTERLINE ANGLE POINTS		
△ PT	X	Y
C1	5987089.37	2181692.15
C2	5986334.07	2182035.55
C3	5986088.27	2182054.45
C4	5985885.57	2181993.85
C5	5985380.77	2181729.75
C6	5984935.97	2181458.25
C7	5984421.07	2181213.45
C8	5983862.47	2181058.95
C9	5983735.07	2181010.85
C10	5983242.97	2180634.65
C11	5983023.37	2180542.35
C12	5982759.17	2180513.25
C13	5982475.57	2180605.75
C14	5982265.37	2180760.35
C15	5981973.07	2181089.55
C16	5981896.67	2181147.35
C17	5981723.17	2181235.75
C18	5981476.77	2181276.25
C19	5980172.77	2181612.05
C20	5979679.07	2181750.05

NAD 83 CHANNEL ANGLE POINTS		
△ PT	X	Y
1	5987101.87	2181719.45
2	5986637.57	2181930.55
3	5986341.67	2182065.05
4	5986084.97	2182084.85
5	5985874.27	2182021.75
6	5985365.97	2181755.85
7	5984921.77	2181484.65
8	5984410.57	2181241.65
9	5983853.17	2181087.55
10	5983720.27	2181037.35
11	5983227.77	2180660.75
12	5983015.77	2180571.65
13	5982762.27	2180543.75
14	5982489.47	2180632.75
15	5982285.67	2180782.65
16	5981993.57	2181111.65
17	5981912.57	2181172.85
18	5981732.57	2181264.65
19	5981482.97	2181305.55
20	5980180.57	2181641.55
21	5979689.27	2181778.35
22	5979668.87	2181721.75

NAD 83 CHANNEL ANGLE POINTS		
△ PT	X	Y
23	5979945.57	2181637.25
24	5979945.57	2181540.95
25	5980138.27	2181487.25
26	5980165.07	2181583.65
27	5981470.57	2181246.85
28	5981713.67	2181206.95
29	5981880.67	2181121.75
30	5981952.57	2181067.35
31	5982244.97	2180738.05
32	5982461.67	2180578.65
33	5982755.97	2180482.65
34	5983030.97	2180512.95
35	5983258.17	2180608.45
36	5983749.77	2180984.35
37	5983871.87	2181030.45
38	5984431.57	2181185.15
39	5984950.27	2181431.85
40	5985395.57	2181703.65
41	5985896.97	2181965.95
42	5986091.47	2182024.15
43	5986326.57	2182006.05
44	5987076.97	2181664.85



Federal Navigation Channel	Beacon, General	<b>Contours</b>
Shoaling Area	Obstruction Point	
Placement Area	Navigation Buoy	-6
Anchorage Area	Navigation Buoy	-5
Wreck Area	Shoalest Sounding*	-4
Submerged Wreck		-3
Angle Point		-2

**NOTES:**  
 DRAWINGS NOT TO BE USED FOR NAVIGATION. ONLY CHANNEL CONDITION AT DATE OF SURVEY.  
 THE LOCATION OF ALL NAVIGATION AIDS ARE BASED ON INFORMATION PROVIDED BY THE U.S. COAST GUARD. BUOY LOCATIONS REPRESENT THE POSITION OF THE SINKER ONLY.  
 SURVEYED BY THE CORPS OF ENGINEERS.  
 SOUNDINGS FOR ARE TAKEN BY FATHOMETER AND ARE SHOWN TO THE NEAREST FOOT AND TENTH OF A FOOT.  
 SOUNDINGS ARE BASED ON THE DATUM OF MEAN LOWER LOW WATER AT THE LOCALITY.

PLANE GRID AND COORDINATES ARE BASED ON LAMBERT PROJECTION, ZONE III NAD 83, CALIFORNIA, AS DESCRIBED IN SPECIAL PUBLICATION NO. 235, PUBLISHED BY NATIONAL OCEAN SURVEY.  
 THE PROJECT DEPTH IS 5 FEET.  
 HORIZONTAL CONTROL: DESIGNATION, SOURCE, XYZ COAST GUARD D-BEACON  
 VERTICAL CONTROL: BENCHMARK, MLLW ELEV., AGENCY B.M. TIDAL 17 (1951), USCGS DISK, 9.73 MLLW HARBOR ST. PUMPHOUSE, EAST FRANCISCO BLVD. B.M. L 551 (1956), USCGS DISK, 15.61 MLLW SAN RAFAEL SANITARY DIST. PUMPHOUSE, PT. SAN PEDRO RD.  
 TIDE GAGE LOCATION: SAN RAFAEL YACHT HARBOR & MARIN YACHT HARBOR  
 STA. 119+00 TO 150+00 ... Marin Yacht Harbor  
 STA. 150+00 TO 200+00 ... San Rafael Yacht Harbor  
 FLOOD ⇒ SLACK ⇒ EBB TIDE SURVEY 5.2 FT ⇒ 6.4 FT.